

# ADDERLINK INFINITY (Model: ALIFI000-P)

**AdderLink INFINITY: Pure digital media extension over IP. Featuring Full DVI, Digital Audio, USB True Emulation, Network Multicast, Device Switching and EPG style user interface**

AdderLink INFINITY allows you to build a flexible infrastructure, the likes of which have not been possible before. Locate computers anywhere you like, share connections to computers, watch the interactions others have with computers, share control, collaborate, switch computers, and so on. The AdderLink INFINITY is also the first device of its kind to allow multicasting across your network. Adder's expertise in IP-based KVM solutions also means that you get the very best video quality and fluid USB-based interactions with your computer. Optimized for both HID and Mass Storage devices, the AdderLink INFINITY uses USB 2.0 technology to deliver reliable and flexible device support.



## FEATURES

### Perfect Digital Video:

The AdderLink INFINITY makes use of multiple video encoding technologies devised by Adder to deliver the very best picture available. Our encoding systems are spatially-lossless, with 1:1 pixel mapping, so the digital video you receive is the same as the digital video leaving the remote computer.

### Intelligent Video Encoding:

The AdderLink INFINITY uses optimal spatially-lossless compression techniques to minimize network bandwidth usage and maximize the user experience. In most usage scenarios, with typical computer desktop applications, the AdderLink INFINITY uses remarkably little bandwidth. When it needs to deliver full screen motion video, it has the capability to process full screen moving video in real time.

### Video Colour Accuracy:

The received video colour is the same as the sent colour every time. There is never a loss of clarity with the AdderLink INFINITY. Because of this, colour-controlled environments such as visual media or scientific imaging can collaborate in real time on projects, handing control across seamlessly to other group members.

### USB True Emulation:

The AdderLink INFINITY enables you to connect any USB human interface device from mice and keyboards through to graphics tablets, jog shuttles, joysticks and 3D explorers. Furthermore, most other USB devices can also be attached, such as Mass Storage devices. Most USB devices fall into a selection of USB device classes, specific types of USB device class can be enabled or disabled from your AdderLink INFINITY network. In secure environments for example, you may wish to ban the use of Mass Storage devices; this is a simple procedure through the A.I.M. System.

### Network Topology:

You can configure your network topology to best suit your needs. If you simply want to extend one computer Tx to one user Rx, you can do so by connecting both Tx and Rx units via a low cost CATx

cable. Distance is not limited - a standard network cable will deliver IP traffic up to 100 metres away. If you want to go further, simply add a network switch to achieve an additional 100 metres. This can be done many times if you wish.

The AdderLink INFINITY network is assumed to be a private network which you manage. As such, you can control maximum data rates generated by each Tx unit to ensure absolute stability.

### Wireless Connectivity:

Because of the efficient manner in which AdderLink INFINITY constructs data for IP transmission, it is perfectly reasonable to make use of standard off-the-shelf wireless routing to connect either Rx or Tx units to your network. Typical desktop applications (word processing, datasheet etc.) will use very little bandwidth.

### Mounting Options:

The AdderLink INFINITY units can be rack-mounted, desktop-mounted, wall-mounted or attached to the back of your monitor using an optional VESA mounting carriage.

### DVI - Digital Visual Interface:

The AdderLink INFINITY features full DVI connectivity. DVI delivers native digital video signals from your computer to your digital panel (LCD for example) without the need to convert signal types from the digital domain. By delivering native digital video throughout the AdderLink INFINITY network, you can be assured of accuracy on each and every pixel.

### USB 2.0:

The AdderLink INFINITY uses USB 2.0 connectivity to interface with your keyboard and mouse, and any other peripheral you wish to use. USB is the most broadly used computer peripheral interface standard available.

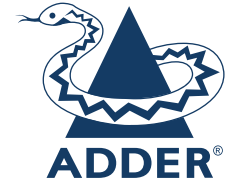
### Digital Stereo Audio:

AdderLink INFINITY delivers crystal clear stereo audio digitally across the network. This ensures continuous fidelity and channel separation between the Tx and Rx units, or even in Multicast environments.

Tx Unit rear Aspect



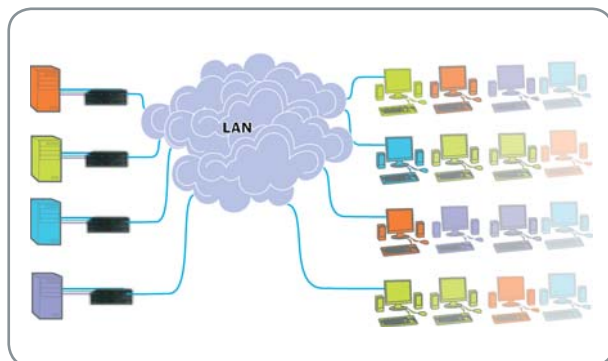
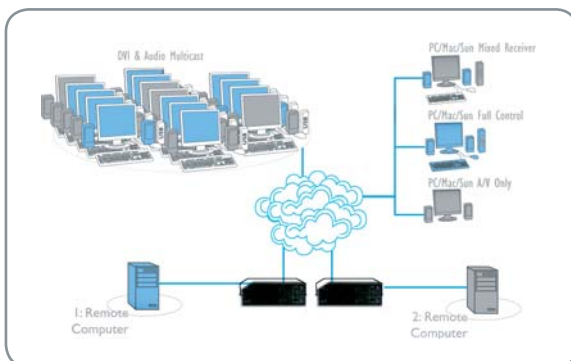
# ADDERLINK INFINITY (Model: ALIF1000-P)



AdderLink INFINITY: Pure digital media extension over IP. Featuring Full DVI, Digital Audio, USB True Emulation, Network Multicast, Device Switching and EPG style user interface

## TECHNICAL SPECIFICATIONS

<b>Hardware compatibility:</b>	All computers with DVI, USB, Audio, RS232 - requirement dependent
<b>Software compatibility:</b>	All known operating systems
<b>Computer connections Transmitter (Tx)</b>	DVI-D x 1, Audio 3.5mm in, Audio 3.5mm out, USB type B, RS232 9 pin D-Type
<b>Computer connections Receiver (Rx)</b>	Video: DVI-D, Audio 3.5mm in, Audio 3.5mm out, USB type A x 4, RS232 9 pin D-Type
<b>Physical design:</b>	1U compact case, robust metal construction. 198mm/7.92" (w), 44mm/1.76" (h), 120mm/4.8" (d), 0.75kg/1.65lbs. 1 per 1U or 2 per 1U rackmount kits available. Also VESA mount/wall mount adapter chassis available.
<b>Power:</b>	2.5mm DC jack (power adapter included), 100-240VAC 50/60Hz, 0.4A, input to power adapter; 5VDC 12.5W output from power adapter
<b>Operating temperature:</b>	0°C to 40°C / 32°F to 104°F
<b>Approvals:</b>	CE, FCC
<b>Order Codes:</b> xx= Mains Lead Country Code: UK = United Kingdom US = United States EURO = Europe AUS = Australia	<b>ALIF1000/P-xx</b> (pair including 1 transmitter and 1 receiver) <b>ALIF1000/T-xx</b> (transmitter only) <b>ALIF1000/R-xx</b> (receiver only)  Rackmount Options <b>RMK 4S</b> : 1 unit per 1U 19 inch <b>RMK 4D</b> : 2 units per 1U 19 inch <b>RMK 4V</b> : VESA mount, can also be used to secure to walls/surfaces.



Local, Remote and Global Computer Control

Distributor / Vertrieb:

**VIDELCO** – Professionelle Audio- Video- Medien-Technik!  
 Tel.: +49 (0)2102 / 86 39-00 • Fax: +49 (0)2102 / 86 39-17 • info@videlco.eu • www.videlco.eu

