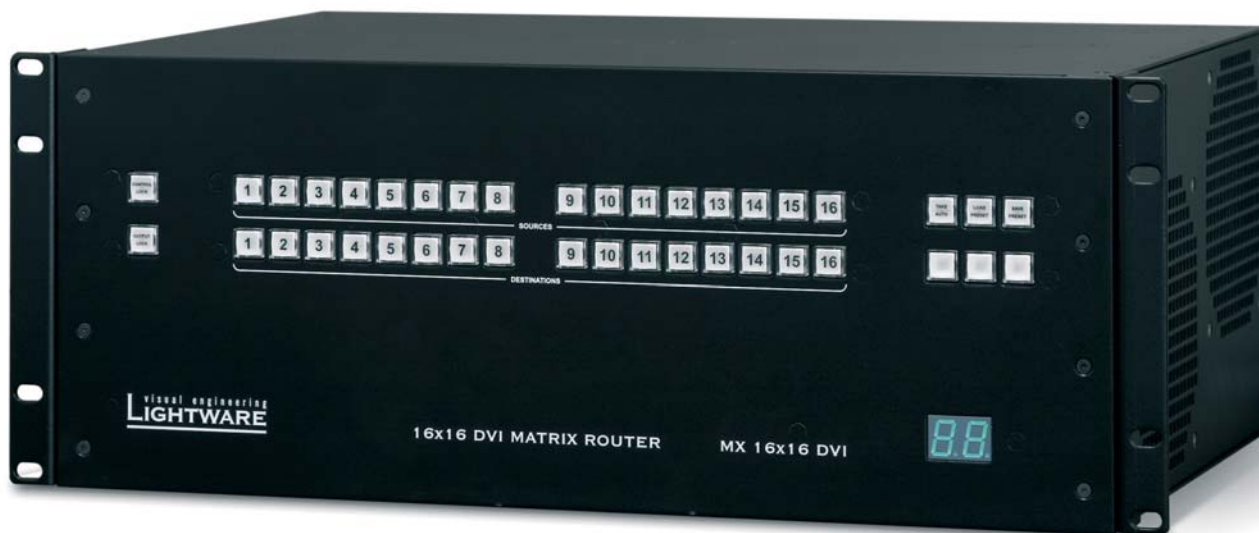


Hybrid MX16x16DVI-PRO / MX32x32DVI-PRO



Fully configurable hybrid matrix switcher supporting DVI, Fiber and CAT5 transmission from 8x8 up to 16x16 or 32x32



MX16x16DVI-Pro / MX32x32DVI-Pro is the highest performance modular expandable DVI routing switcher that offers up to 16 / 32 inputs and up to 16 / 32 outputs. Multiple type input and output cards (DVI; Fiber and CAT5) can be used in mixed format that allows the most flexible and integrated solution on the market.

Each Input and Output card contains 8 channels, and any combination can be used in a single frame. For short distances up to 50 meters the DVI or CAT5 I/O cards are suggested, for longer distances fiber solution is suggested.

Single Fiber Technology: Lightware single fiber technology offers the latest, state of the art digital signal transmission. Only one multimode fiber cable is used per one DVI signal, opposite to competitors, who use 4 fiber channels and copper wires. Single fiber technology lowers the system infrastructure cost and isolates sources and receivers from ground loops and hum noises.

MX16x16DVI-Pro / MX32x32DVI-Pro fiber crosspoint matrix switcher supports all DVI-D resolutions up to 1920x1200 and 2048x1080.

All outputs of the DVI matrix router are reclocked for stable, jitter free signal transmission. Each DVI output powers fiber optic DVI cables on +5V pin, that allows transmission of DVI signals for long distances.

The unit can be controlled either by RS232 / RS422 port or TCP/IP LAN connection or by built in website.

Features:

- Hybrid fiber, DVI and CAT5 input and output capabilities
- Single Fiber Technology
- Rugged Neutrik fiber connectors for rental applications
- DVI signal transmission over one CAT5 cable
- Routing from 8x8 up to 16x16 / 32x32 single link DVI signals
- 50 meter DVI cable compensation on all DVI and RJ45 inputs
- Field-upgradeable, modular design
- Web page hosting capabilities
- 1920x1200 and 2048x1080 maximal resolutions
- Front panel buttons control
- Advanced EDID Management
- RS232 or RS422 and Ethernet control



2009-05

Distributor / Vertrieb:

VIDELCO – Professionelle Audio- Video- Medien-Technik!

Tel.: +49 (0)2102 / 86 39-00 • Fax: +49 (0)2102 / 86 39-17 • info@videlco.eu • www.videlco.eu


VIDELCO
Europe Limited

Hybrid MX16x16DVI-PRO / MX32x32DVI-PRO



Connectors

DVI input and output:	24 pole DVI-D connector
CAT5/CAT6 input and output	Category 6 RJ45 shielded
Fiber:	LC or Neutrik NO2-4FD LC duplex
Power:	IEC Power inlet
RS-232 or 422:	9p sub D female
LAN:	RJ-45
GPIO:	Phoenix 5 pole

Specifications:

Routing:	16x16 / 32x32 non-blocking - any input(s) to any output(s)
Bit rate:	1.65 Gbit/s per colour
Resolution:	640x480 to 1920x1200 or 2048x1080
EDID memory:	50 factory preset, and 50 user programmable
EDID emulation:	256 Byte Extended EDID v1.3

Control	
Front panel buttons:	Yes
RS232 / 422:	9600 Baud Rx; Tx
LAN:	Ethernet 10Base-T or 100Base-TX (Auto-Sensing)
WEB:	built in website

Inputs DVI and RJ45:	
DVI8x DVI-D single link / input card	
Equalization:	40dB automatically

Outputs DVI and RJ45:	
8x DVI-D single link / output card	
Reclocking:	Yes
+5V current:	500mA / DVI output connector

Fiber inputs and outputs	
Mode:	Multimode 850 nm
Transmission distance:	500 meters
Connectors:	LC or Neutrik NO2-4FD type LC compatible

Power:	100 to 240 V AC or DC 3.0 Amps
Dimension:	4U rack mount, 176.5(height) x 440(width) x 302(depth) [mm]
Compliance:	CE

Optional accessories

DVI-UTP TX20	CAT5 transmitter with local monitor output and EDID Management
DVI-UTP RX100	CAT5 receiver with DVI output
DVI-OPT TX200	Fiber optical transmitter. DVI signal transmission over one multimode fiber. Local monitor output
DVI-OPT RX100	Fiber optical receiver with one DVI output.

2009-05

Distributor / Vertrieb:

VIDELCO – Professionelle Audio- Video- Medien-Technik!

Tel.: +49 (0)2102 / 86 39-00 • Fax: +49 (0)2102 / 86 39-17 • info@videlco.eu • www.videlco.eu


VIDELCO
Europe Limited

Hybrid MX16x16DVI-PRO / MX32x32DVI-PRO

MX-DVI-FR16

16x16 DVI routing frame, accepts 2 input and 2 output boards



MX-DVID-IB

8 channel DVI-D single link input card with DVI-D connectors. Adaptive equalization for up to 60 meter DVI cable and EDID Management on each input.



MX-DVID-OB

8 channel single link DVI-D output board with signal reclocking.



MX-RJ45-DVI-IB

8 channel RJ45 input board for DVI signal transmission over single CAT5 cable. DDC and EDID emulation on second, DDC connector. Input cable equalization. Use with DVI-UTP TX200 transmitter.



MX-RJ45-DVI-OB

8 channel RJ45 output board for DVI signal transmission over single CAT5 cable. Signal reclocking. Use with DVI-UTP RX100 receiver.



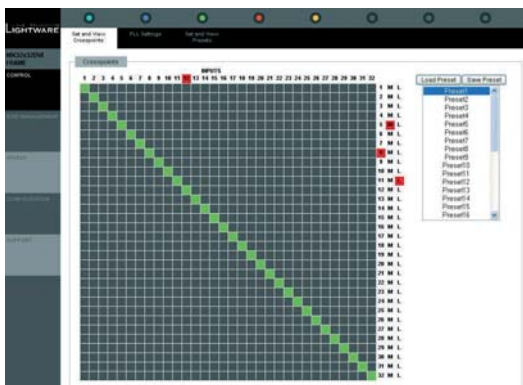
MX-OPT-DVI-IB-NT

8 channel fiber optical input card. One multimode fiber for each DVI channel. Neutrik duplex LC connectors, max 500 meter transmission distance.



MX-OPT-DVI-OB-NT

8 channel fiber optical output card with signal reclocking. One multimode fiber for each DVI channel. Neutrik duplex LC connectors, max 500 meter transmission distance.



Built in website for easy control and setup.

Controls all functions of the router like IP configuration, routing, EDID Management, system status monitoring, etc.



2009-05

Distributor / Vertrieb:

VIDELCO – Professionelle Audio- Video- Medien-Technik!

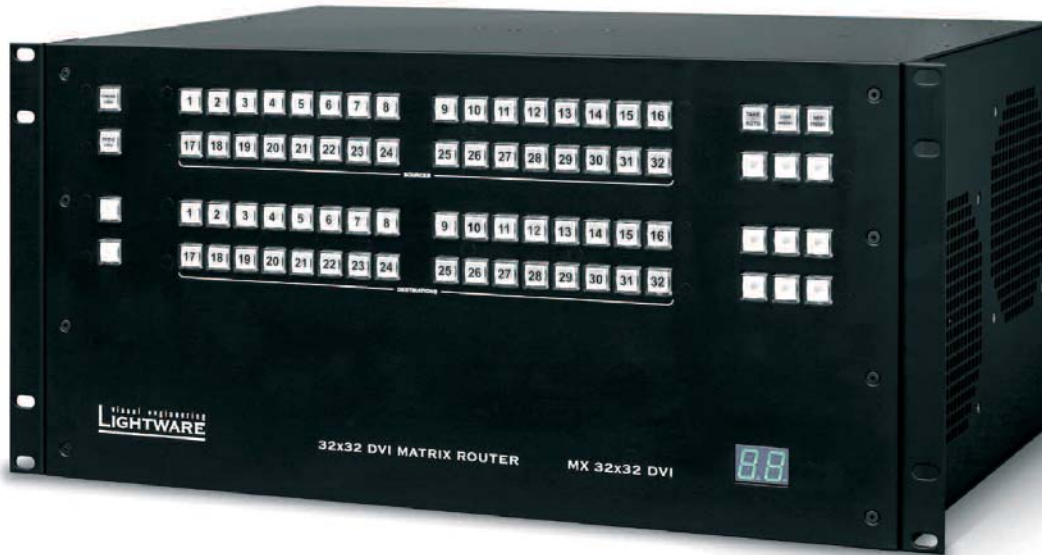
Tel.: +49 (0)2102 / 86 39-00 • Fax: +49 (0)2102 / 86 39-17 • info@videlco.eu • www.videlco.eu

VIDELCO
Europe Limited

Hybrid MX16x16DVI-PRO / MX32x32DVI-PRO



Fully configurable DVI matrix switcher from 8x8 to 32x32 for large applications



Available I/O sizes

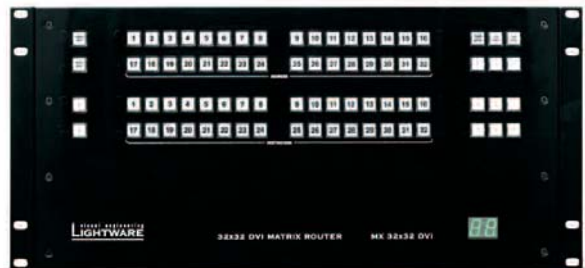
	8 inputs	16 inputs	24 inputs	32 inputs
8 outputs	8x8	16x8	24x8	32x8
16 outputs	8x16	16x16	24x16	32x16
24 outputs	8x24	16x24	24x24	32x24
32 outputs	8x32	16x32	24x32	32x32

MX-DVI-FR16

16x16 DVI routing frame, accepts 2 input and 2 output boards

MX-DVI-FR-32

32x32 DVI routing frame, accepts 4 input and 4 output boards



MX-DVID-IB

8 connector DVI-D input board



MX-DVID-OB

8 connector DVI-D output board



2009-05

Distributor / Vertrieb:

VIDELCO – Professionelle Audio- Video- Medien-Technik!

Tel.: +49 (0)2102 / 86 39-00 • Fax: +49 (0)2102 / 86 39-17 • info@videlco.eu • www.videlco.eu

VIDELCO
Europe Limited