

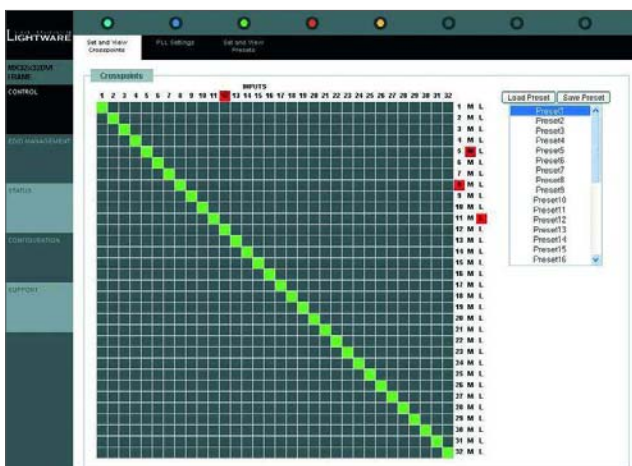
Dual Link DVI configurable Matrix Switchers from 4x4 up to 16x16



Lightware PRO series Dual Link DVI Input and Output boards give the free choice to build custom size Dual Link DVI routers that support all professional features like built in Cable equalization, Signal Reclocking, Advanced EDID Management, Fiber cable powering, etc. Built for high reliability, 7/24 operation MX-DVI-DLIB and MX-DVI-DL-OB perfectly fit in Lightware MX-FR16; MX-FR32 and redundant MX-FR32R router frames.

The built in sophisticated software and hardware features make the routers most flexible and integrated solution for AV professionals and state of the art command centers. Each Input and Output board contains 4 channels, and any input can be switched to any or more outputs.

Built - in website for easy control and setup



Controls all functions of the router like IP configuration, routing, EDID Management, system status monitoring, etc.

Features

- Dual Link DVI support
- 60 meter copper cable compensation on all inputs
- Routing from 4x4 up to 16x16 Dual Link DVI signals
- Gold plated industrial grade PCB boards and connectors
- Reclocking for output
- Field-upgradeable, modular design
- Web page hosting capabilities
- Front panel buttons control
- Advanced EDID Management
- RS-232 or RS-422 and Ethernet control
- Vista Spyder and Encore compatibility

I/O sizes

- 4x4; 8x4; 12x4; 16x4; 4x8; 8x8; 12x8; 16x8;
4x12; 8x12; 12x12,
- 16x12; 4x16; 8x16; 12x16; 16x16

Applications

- Command Control centers
- QUXGA soft edge blending
- 4K applications
- Professional AV systems, conference rooms
- 3D Visualizations
- Virtual Reality applications
- CAD/CAM display
- Medical imaging

Control

Front panel buttons:	Yes
RS-232 / RS-422:	9600 Baud Rx; Tx
LAN:	Ethernet 10Base-T or 100Base-TX (Auto-Sensing)
WEB:	built-in website
Power:	100 to 240 V AC 3.0 Amps
Power consumption:	26W
Dimensions:	446 (482)W x 103D x 133H mm
Compliance:	CE, UL, FCC
Net weight:	4250 gramms
Warranty:	3 years

Specifications

Routing:	8x8 or 16x16 non-blocking - any input(s) to any output(s)
Bit rate:	2.25 Gbit/s per color
Resolution:	640x480 to 4K
EDID memory:	50 factory preset, and 50 user programmable
EDID emulation:	256 Byte Extended EDID v1.3

