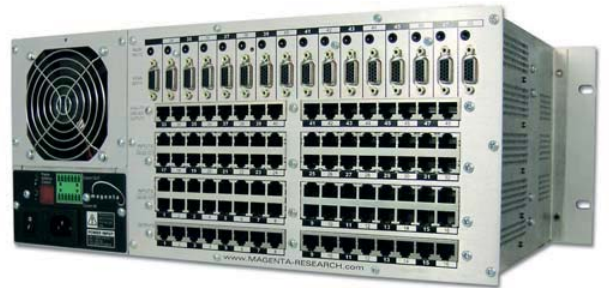


Mondo Direct™ VGA + Audio Input Cards

The Pro A/V Industry's Cat5 Switch Platform Adds Direct-connect Convenience

Integrated transmitters reduce rack space, lower installation costs and eliminate UTP cable input lengths



Mondo Matrix™ with Mondo Direct™ Input Cards: (shown) 16 VGA + 32 UTP inputs x 16 outputs

Magenta Research's Mondo Matrix™ scalable Cat5 switcher now offers Mondo Direct™ Input Cards, enabling the direct input of video and audio sources. Available configurations include Mondo Direct-inputs only, Mondo Direct plus RJ-45 inputs and various matrix sizes (examples below).

Each Mondo Direct card has inputs for 16 sources, delivering video plus audio to a Mondo Matrix switcher. This eliminates the need for stand-alone MultiView™ Series transmitters, removes UTP cable input lengths, reduces rack space and lowers installation labor costs. Two Mondo Direct cards plus 16 RJ-45 outputs fit into each 4U modular Mondo frame.

Examples of Mondo Matrix configurations with Mondo Direct Input Cards:

- 32 VGA + audio direct inputs x 16 RJ-45 outputs (32x16 total), 1 frame, 4U rack space
- 16 VGA + audio direct inputs + 32 RJ-45 inputs x 16 RJ-45 outputs (48x16 total), 1 frame, 4U
- 16 VGA + audio direct inputs + 32 RJ-45 inputs x 32 RJ-45 outputs (48x32 total), 2 frames, 8U
- 32 VGA + audio direct inputs x 32 RJ-45 outputs (32x32 total), 2 frames, 8U
- 32 VGA + audio direct inputs x 128 RJ-45 outputs (32x128 total), 8 frames, 32U

Mondo Direct cards incorporate Magenta's proprietary MultiView technology, allowing RGBHV, component* (see specifications) or S-video, plus balanced left/right audio—to be distributed anywhere from one to 2,000 feet with superior image quality.

Companion Products:



MultiView 500A Receiver



MultiView K-500TD Twin-Display Receiver



MultiView AK600DP Receiver

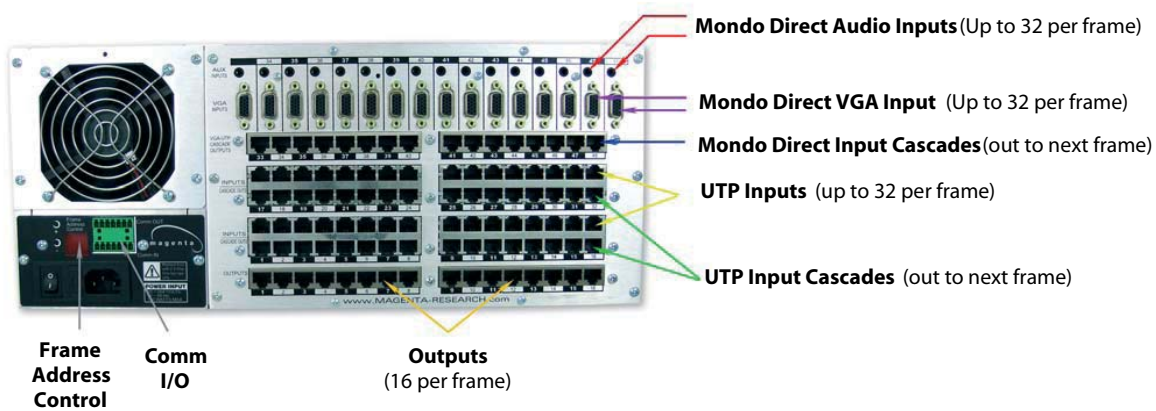


MultiView AK1200DP Receiver



MultiView XR-2000DP Receiver

Mondo Matrix with Mondo Direct Input Cards Back Panel



Mondo Matrix Benefits

- Configurable from 16x16 to 256x512 – in steps of 16 inputs or outputs – to meet a wide-range of larger-scale full-matrix switching applications
- Audio and/or serial pairs can be switched separately
- Enables high-resolution video, audio and serial distribution to 2000 feet (610 meters)
- Video, audio and/or serial signals are switched in combination, greatly reducing complexity
- Cat5 / RJ45 inputs and outputs, rather than BNC's, lead to a dramatic reduction in:
 - connections
 - rack space
 - power consumption
 - installation labor

Mondo Direct Benefits

- Removes UTP cable input lengths
- Eliminates need for stand-alone MultiView transmitters and power supplies
- Further reduces rack space needed
- Additionally lowers installation labor
- Mondo Direct transmitters incorporate MultiView technology, allowing input of RGBHV, RGB, YUV, component, S-video, PAL, or HDTV analog video plus audio
- Configurations from 16x16 to 32x128, in increments of 16 inputs and/or outputs

Specifications

Video & Aux Signals

Signal configuration: 4 identical, individually routable channels per RJ-45 jack.
Input impedance: 100 Ω balanced (compatible with all MultiView equipment)
Nominal input amplitude: 1 Volt P-P
Dynamic headroom: >3dB
Gain from transmitter input to receiver output through switch: Unity
Coupling from transmitter input to receiver output: DC
Circuitry bandwidth: >220MHz
Signal type: 1,2,3,4 & 5 component video + aux channels (Via MultiView)
Input connectors: Thirty-two (32) HD15F (Full Population) + Thirty-two (32) RJ-45 Female (Full Population)
Loop out connectors: Sixty-four (64) RJ-45 Female (Full Population)
Output connectors: Sixteen (16) RJ-45 Female
Switch speed: 50 ns upon recognition of commands

Video

Video Support: VGA, SVGA, XGA, XGA-2, RGBHV, RGB, S-Video, Component* Video modes
Resolution: To 1920x1200 (receiver dependent)

***Note:** Video sources must be DC coupled with the black level referenced to 0 volts. AC coupled signals must utilize MultiView UTx Transmitters, which feature DC restore capability.

Audio

Input Connectors: Thirty-two (32) 3.5 mm (Full population)
Channels: Right/Left summed
Type: Line Level 600 Ohm Unbalanced

Required Source Impedance

Video OUT: 75 ohms;
Audio models: Audio OUT: 600 ohms maximum

Required Destination Impedance: Video IN: 75 ohms;
Audio models: Audio IN: 600 ohms minimum SPDIF audio models: 75 Ohm.

Control

Protocol to switch: RS-232/RS-422, Selectable; 9600 baud standard
Protocol between master and slave frames: RS-232
Interface connector, input: 7 position Phoenix
Interface connector, output: 7 position Phoenix

All input to output switching commands are received and processed by the master frame. Additional frames used within the matrix are connected in a daisy chain and receive processed complex routing commands from the master frame.

Power

Power input: 90~264 V / 50~60 Hz
Consumption: 150 W Max

Environmental

Temperature/humidity: Storage -40° to +158°F (-40° to +70°C) / 10% to 90%, non-condensing
Operating: 0° to +100°F (0° to +37°C) / 10% to 90%, non-condensing

Mechanical

Rack mount: Standard, 4U 19" EIA
Enclosure type: Front Panel: Powder coat chassis, passivated aluminum
Enclosure dimensions: 6.7" H x 19" W x 10.5" D (170 mm H x 483 mm W x 267 mm D)
Mass: 16 lbs (7.3 kg) fully populated
Vibration: ISTA/NSTA 1A in carton (International Safe Transit Association)
Compliances: CE; FCC Class A Safety: EN60950
MTBF: 100,000 hours, nominal