

# 1T-C2-750

## Dual PIP DVI-I Switcher/Scaler



### Key Features 1T-C2-750

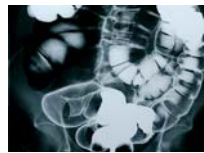
- Dual scalers
- 2x DVI-I Inputs
- User loadable images
- DVI-D input/output support 1920x1200 60Hz
- DVI-A in/output support 2048x2048
- Analog supports RGBHV, RGBS, RGsB & YPbPr
- HDTV Resolutions to 1080p / 60
- Control via RS-232, IR or Front Panel
- Windows Control Panel
- Variable zoom to 10X & shrink to 10%
- Per-pixel or percentage scaling
- Full picture-in-picture (PIP)
- Autoset - Auto analog picture sizing
- Chromakey and Luma-key
- Genlock, Mix and PIP
- Optional IR Remote Control Unit
- Optional Single/Dual Rackmount Kit

Based on TV One's exclusive CORIO®2 Technology the **1T-C2-750**

includes two high-quality graphic scalers capable of working at full DVI video rates. It can process digital DVI-D and analog DVI-A signals including RGBHV, RGBS, RGsB and YPbPr formats, using the two DVI-I inputs and one DVI-I output available. Each of these inputs can be scaled and/or converted to any of the accommodated formats if required and HDMI signals (with or without HDCP) are also accommodated using adaptors. As well as scaling and conversion, the unit is fully equipped to provide dual picture-in-picture windowing, seamless switching, keying and overlaying, 10 editable presets and Flash memory for the storage of 10 user loadable images such as custom logos and testcards.



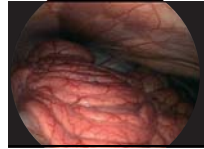
### Dual Picture-in-Picture



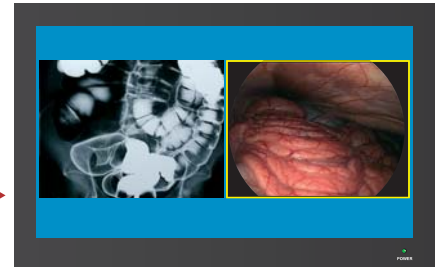
Source A



Source B



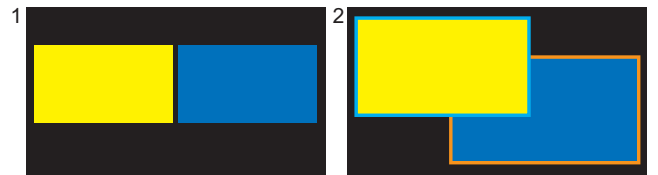
The 1T-C2-750 can be used as a Dual Picture-in-Picture device as shown. In this example Source A and B are re-sized and positioned side by side over a colour background. Source B has also been given a colour border.



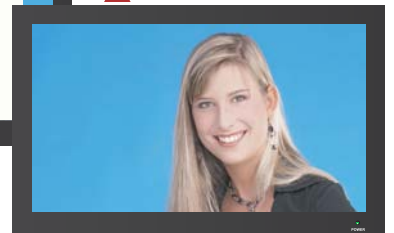
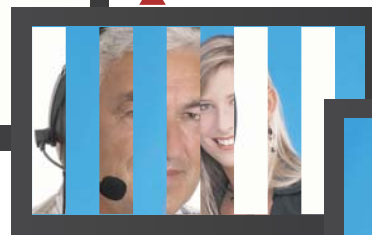
### 10 Editable Presets

#### Preset examples

- 1 - Dual PIP
- 2 - Layered PIPs + borders
- 3 - Coloured background
- 4 - Transparency
- 5 - Stored user image (ie keyed logo)



### Seamless Switching



The 1T-C2-750 can be used as a Seamless Switcher between two full screen images. Transition from one input to the other is by either fade, cut or curtain wipe.

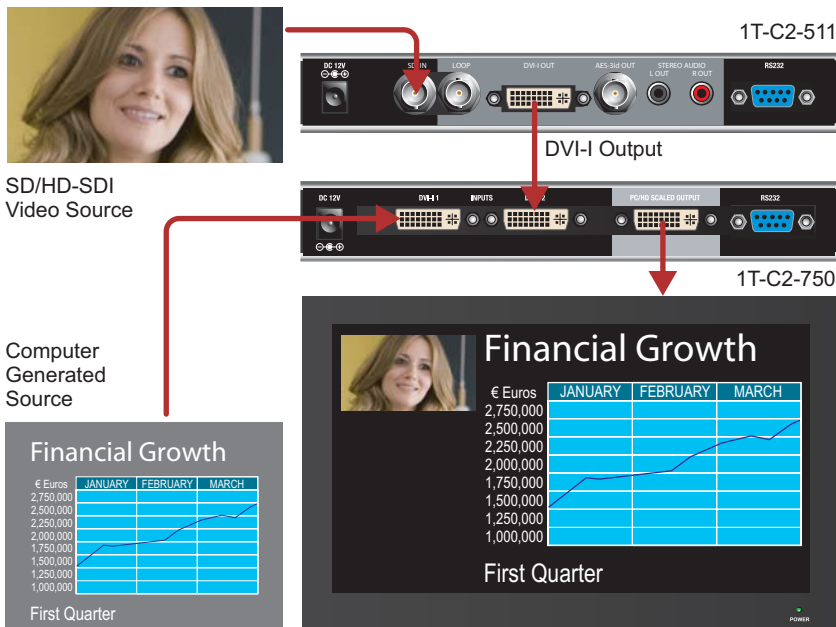
A stored user image such as a custom logo or test card can also be keyed, scaled and positioned over the full screen image.



## Combining with other TV One products

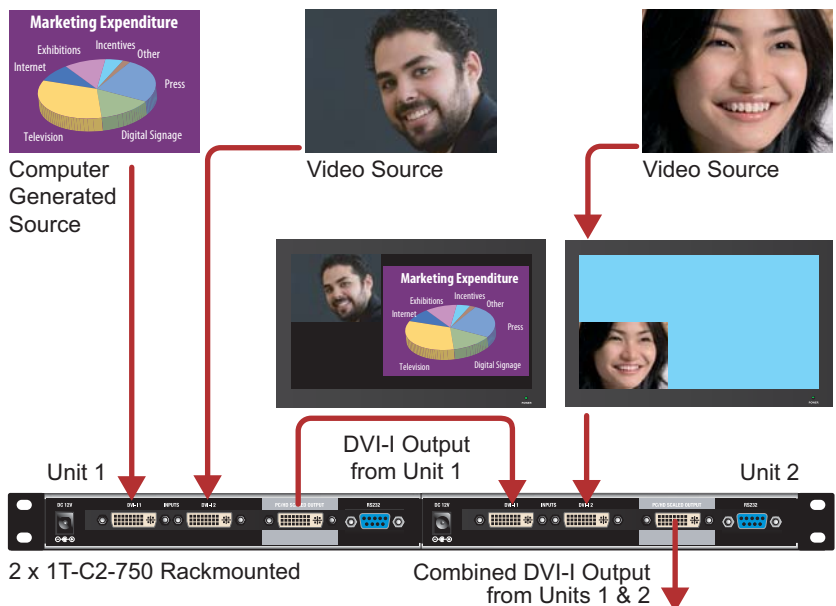
The 1T-C2-750 can be used with many other TV One products such as digital or analog routing switchers, format converters and distribution amplifiers for advanced application solutions.

The below example illustrates the addition of the 1T-C2-511 SD/HD-SDI to DVI-I format converter allowing a live video source to be scaled, positioned and overlaid on to a computer generated image.



Both units can be mounted side by side in a 19" Rackmount Kit

## Cascading 2 or more units

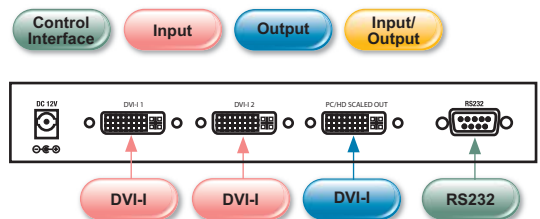


Several 1T-C2-750 units can be cascaded resulting in additional picture-in-picture graphics, logos, testcards and keyed images onto one screen. This example shows the combination of two units to provide three scaled and positioned images from three separate sources over a colour background.



## 1T-C2-750 Specifications

<b>Video Inputs</b>	
Signal Type	2x DVI-I via DVI-I Connector
Digital DVI-D Resolutions	PC to 1920x1200, HD to 1080p/60
Analog DVI-A	RGBHV, RGBS, RGsB, YPbPr
Sync	TTL Level, 10KΩ, Pos or Neg
Termination	75Ω
R-G-B Level Range	0.5-2.0 Vp-p
Scan Rate Detection	Automatic
PC Resolutions	Any up to 2048x2048
HDTV Resolutions	Any up to 1080p/60
Max Horiz Scan Rate	150KHz
Computer Compatibility	PC, Macintosh, Workstations
<b>Computer Outputs</b>	
Signal Type	1x DVI-I via DVI-I Connector
Format	RGBHV, RGBS, RGsB, YPbPr
R-G-B Level	0.7 Vp-p
Analog Signals	PC to 2048x2048, HD to 1080p/60
DVI Signals	PC to 1920x1200, HD to 1080p/60
Vertical Refresh Rate	Any to 250Hz
<b>General</b>	
Size and Position	Automatic via AutoSet or Manual
Image Size	User-Definable Presets
Image Freeze	One Video Frame
Settings Memory	Non-Volatile
Zoom Range	Variable to 10X Zoom
Shrink Range	Variable to 10%
Image Mirroring	Horizontal and/or Vertical
Horizontal Filtering	Full Digital
Conversion Technology	Proprietary – CORIO@2
Frame Rate Conversion	Frame add/drop
Color Resolution	24-bit (16.8 Million Colors)
Sampling Rate	162MHz
Digital Sampling	24-bit, 4:4:4 format
Firmware Memory	Flash, Upgradeable via RS-232
Analog Video Adjustments	R-G-B Levels Contrast, Phase
<b>Control Methods</b>	
Local	via Front Panel Buttons & OSD
RS-232 Interface	via D9 Female Connector
Infrared Remote	via IRC-5 Remote Unit
<b>Warranty</b>	
Limited Warranty	2 Years Parts and Labor
<b>Regulatory Compliance</b>	
Main Units	FCC, CE, RoHS
Power Supplies	UL, CUL, CE, PSE, GS, RoHS
<b>Mechanical</b>	
Size (H-W-D)	30x200x90mm (1.18"x7.87"x3.54")
Weight (Net)	0.52 kg (1.14 lbs)
<b>Environmental</b>	
Operating Temperature	0° to +50° C (+32° to +122° F)
Operating Humidity	10% to 85%, Non-condensing
Storage Temperature	-10° to +70° C (+14° to +158° F)
Storage Humidity	10% to 85%, Non-condensing
<b>Power Requirement</b>	
External Power Supply	12VDC@1A
<b>Accessories Included</b>	
1x Operations Manual	1T-C2-750
1x Power Adapter	US, UK or Euro
<b>Product Item Numbers</b>	
1T-C2-750	Dual-PIP DVI-I Switcher/Scaler
<b>Optional Accessories</b>	
IRC-5	Infrared Remote Control
RM-230	Single/Dual Rackmount Kit
ZDH-2038	DVI Male to 5-BNC Female
ZDH-2040	DVI Male to VGA Female



Distributor / Vertrieb:

**VIDELCO** – Professionelle Audio- Video- Medien-Technik!  
Tel.: +49 (0)2102 / 86 39-00 • Fax: +49 (0)2102 / 86 39-17 • info@videlco.eu • www.videlco.eu