

1T-C2-760

DVI Scaler PLUS



Based on TV One's exclusive CORIO®2 Technology the compact **1T-C2-760** has a single Enhanced Bandwidth high-quality graphic scaler with two DVI-I inputs (DVI-D, RGBHV, YPbPr). Both SD and HD YPbPr inputs are de-interlaced using pixel-based motion compensation with diagonal interpolation, motion adaptive noise reduction and 3:2 pull-down for SD/HD movie sources. Significant improvements to frame-rate conversion are achieved by employing temporal interpolation. The two inputs enable full picture-in-picture flexibility and seamless switching.



Key Features 1T-C2-760

- Single Enhanced-Bandwidth scaler
- 2x DVI-I Inputs, 1x DVI-I Output
- Internal still image store for 10 images
- DVI-D I/O support 2880x900, 1920x1200, 1080p/60
- DVI-A I/O support 2048x2048 1080p/60
- Analog supports RGBHV, RGBS, RGsB & YPbPr
- 525i/625i/1080i de-interlacing using motion compensation and adaptive noise reduction
- 3:2 pull-down for 525i/1080i sources
- Temporal interpolation frame-rate conversion
- 10 user defined presets
- Variable window border color & size
- Edge-blending
- Cut/Fade/Wipe/Push source transitions
- Control via RS-232, IR or Front Panel
- Windows Control Panel
- Variable zoom to 10X & shrink to 10%
- Per-pixel or percentage scaling
- Single PIP of variable size
- Autoset - Auto analog picture sizing
- Chromakey and Lumakey
- Genlock and Mix
- Support for all current HDTV resolutions
- Automatic resolution detection
- Locking DC Power adaptor
- Optional IR Remote Control Unit
- Optional Single/Dual Rackmount Kit

Single-Link DVI-D resolutions to 2880 x 900 pixel support

The 1T-C2-760 DVI Switcher/Scaler's support of resolutions up to 2880 x 900 pixels (double WXGA) makes it ideal for use with ultra-wide displays and training simulators. The use of this panoramic proportion adds a whole new dimension to the world of computer gaming.

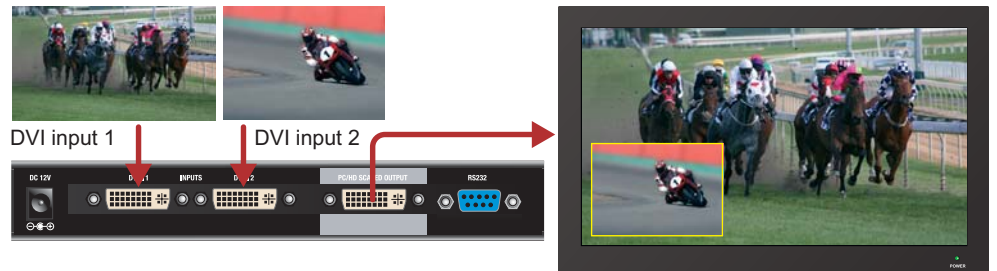


Ultra-wide display



Training simulators

Picture-in-Picture



The 1T-C2-760 can be used as a Picture-in-Picture device as shown. In this example DVI input 2 is re-sized, had a border applied and positioned over DVI input 1.

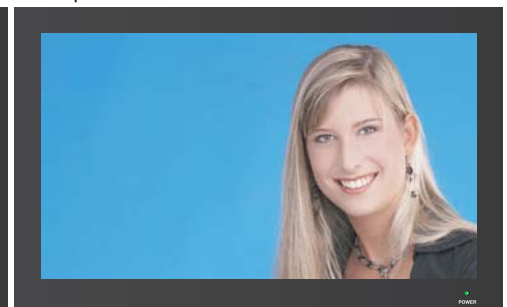
Seamless Switching

The 1T-C2-760 can be used as a Seamless Switcher device, enabling the user to toggle between the two DVI inputs with either a cut, or via a transition through black or the background source. In the example below, DVI source 1 cuts to DVI source 2.

DVI input 1

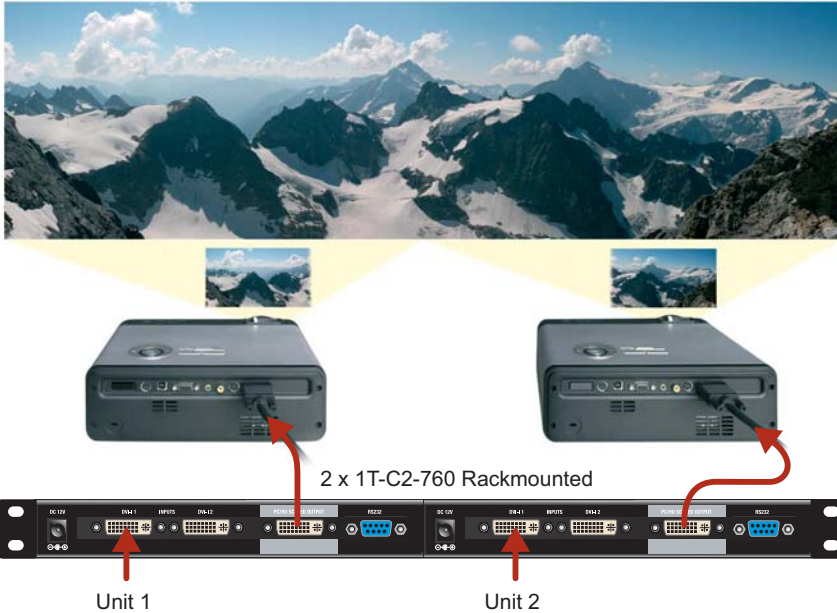


DVI input 2



Edge Blending

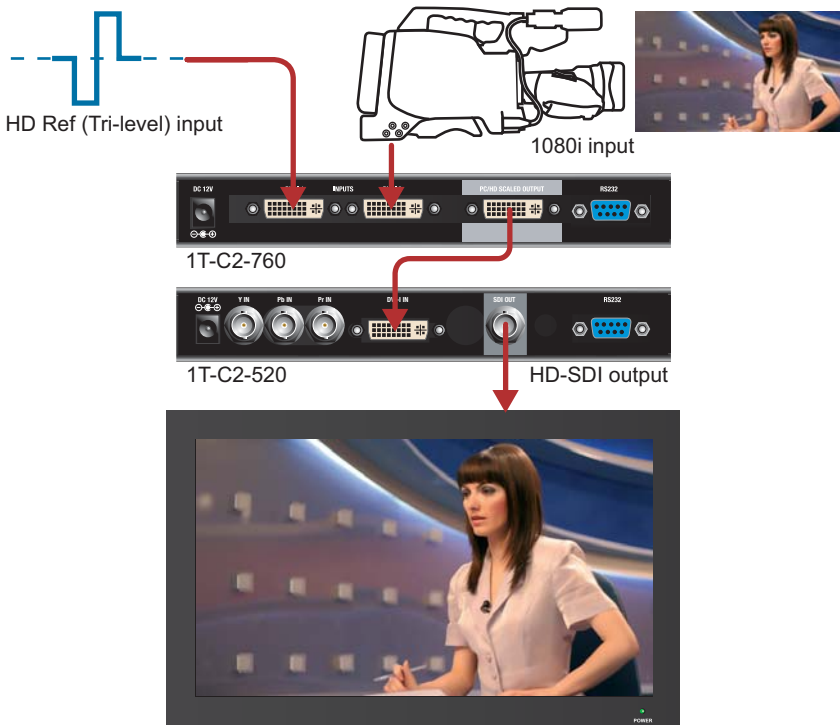
The 1T-C2-760 fully supports Edge-blending, complete with variable blend widths, gamma correction and projector black-level adjustments. Image alignment and set-up is made easy using TV One's Edge-blend tool; a dedicated software application. Two units can thus be used to create a large wide-screen display using two matched projectors.



Combining with other TV One products

The 1T-C2-760 can be used with many other TV One products such as routing switchers, format converters and distribution amplifiers for advanced application solutions.

The example right shows how, in a broadcast environment, the 1T-C2-760 can be connected to a 1T-C2-520. Linking these two units enables a HD digital input (i.e. a HD video camera) to be genlocked to a Tri-Level reference signal and then be output as HD-SDI - a purely digital path requiring no analog-digital signal conversion.



Both units can be mounted side by side in a 19" Rackmount Kit

1T-C2-760 Specifications

Inputs	2x DVI-I via DVI-I Connector
Signal Type	
Digital DVI-D Format:	
Max HD Resolutions	1080p@60Hz, 1920x1200@60Hz
Max PC Resolution	2880x900@60Hz
Analog DVI-A Format:	
Max HDTV Resolution	1080p@60Hz
Max PC Resolution	2048x2048
Max Horiz Scan Rate	150KHz
Signal Format	RGBHV, RGBS, RGsB, YPbPr
Sync	TTL Level, 10KΩ, Pos or Neg
Termination	75Ω
R-G-B Level Range	0.5-2.0 Vp-p
Scan Rate Detection	Automatic
Output	
Signal Type	1x DVI-I via DVI-I Connector
Digital DVI-D Format:	
Max HD Resolutions	1080p@60Hz, 1920x1200@60Hz
Max PC Resolution	2880x900@60Hz
Analog DVI-A Format:	
Max HDTV Resolution	1080p@60Hz
Max PC Resolution	2048x2048
Vertical Refresh Rate	Any to 250Hz
Signal Format	RGBHV, RGBS, RGsB, YPbPr
R-G-B Level	0.7 Vp-p
General	
Size and Position	Automatic via AutoSet or Manual
Image Size	User-Definable Presets
Image Freeze	One Video Frame
Settings Memory	Non-Volatile
Zoom Range	Variable to 10X Zoom
Shrink Range	Variable to 10%
Image Mirroring	Horizontal and/or Vertical
Horizontal Filtering	Full Digital
Conversion Technology	Proprietary – CORIO®2
Frame Rate Conversion	Temporal interpolation
Color Resolution	24-bit (16.8 Million Colors)
Sampling Rate	165MHz maximum
Digital Sampling	24-bit, 4:4:4 format
Firmware Memory	Flash, Upgradeable via RS-232
Analog Video Adjustments	R-G-B Levels Contrast, Phase
Control Methods	
Local	via Front Panel Buttons & OSD
RS-232 Interface	via D9 Female Connector
Infrared Remote	via IRC-5 Remote Unit
Warranty	
Limited Warranty	2 Years Parts and Labor
Regulatory Compliance	
Main Units	FCC, CE, RoHS
Power Supplies	UL, CUL, CE, PSE, GS, RoHS
Mechanical	
Size (H-W-D)	30x200x90mm(1.18"x7.87"x3.54")
Weight (Net)	0.52 kg (1.14 lbs)
Environmental	
Operating Temperature	0° to +50° C (+32° to +122° F)
Operating Humidity	10% to 85%, Non-condensing
Storage Temperature	-10° to +70° C (+14° to +158° F)
Storage Humidity	10% to 85%, Non-condensing
Power Requirement	
External Power Supply	12VDC@1A
Accessories Included	
1x Operations Manual	1T-C2-760
1x Power Adapter	US, UK, Euro or Australia
Product Item Numbers	
1T-C2-760	DVI-I Scaler PLUS
Optional Accessories	
IRC-5	Infrared Remote Control
RM-230	Single/Dual Rackmount Kit
ZDH-2038	DVI Male to 5-BNC Female
ZDH-2040	DVI Male to VGA Female

