

C2-8000

Universal Input Seamless Switcher (▲▼✕)



C2-8000 Universal Input Seamless Switcher is based on TV One's exclusive CORIO®2 technology and provides high quality video switching with two-channel bi-directional conversion between a variety of analog and digital video formats. The standard system features multiple DVI-U input modules (allowing any of HDMI, DVI, Composite Video, YC, YUV, YPbPr or RGB) that can be scaled and switched between, along with two independent processing channels. The system can also have 3G-SDI input/output modules fitted, as well as audio I/O.

The high resolution DVI-U (HDMI, DVI, CV, YC, YUV, YPbPr or RGB) outputs are selectable as virtually any PC or HDTV resolution (or SDI with the 3G-SDI I/O module). Our exclusive AutoSet feature takes the hassle out of setup by automatically sizing and positioning the computer image to fit exactly on the video screen. NTSC, PAL, PAL-M, PAL-N, SECAM standards are supported.

In Switcher mode, transitions include Cross-fade, Push, Wipe and Cut. Independent mode gives two channels of video conversion. Dual PIP mode allows two windows to appear together on the same output. All modes allow Background sources to be used along with Keying and Logo insertion.

Signal parameters of the incoming video may be adjusted. All settings are stored in non-volatile memory and are retained even when power is switched off. User defined presets are also available to customize settings for various applications.

All the functions can be controlled via the front panel Push Buttons, an RS-232/422/485 or IP connection. Windows Control Panel software is provided and most third party control systems interface directly with the entire C2 range of products. A front panel LCD makes setup easy. The unit is housed in a standard 1U rack mount case and features an optional redundant internal PSU and power inlet.

Variable Zoom to 10X enlarges any part of the computer screen to fill the entire video screen and position controls allow movement to any area desired. Variable Shrink to as little as 10% allows fitting the image onto most displays. The advanced Digital Flicker Elimination circuitry and high sampling rate ensures crisp, clear images, while full bandwidth chroma sampling ensures faithfully reproduced, high resolution colors. Pixel Level Motion Adaptive Diagonal Interpolation and Noise Reduction ensures high quality de-interlacing of PAL, NTSC and 1080i signals. 3:2 Pull-down ensures proper 24 fps film extraction from NTSC and 1080i sources.

Advanced Features - The Key Mode allows one input to be keyed over another. The keyed image may be faded in and out. Due to the 4:4:4 RGB/DVI sampling format, precise keying at the pixel level can be achieved. The Mix Mode permits Seamless Cut, Fade or Wipe transitions between input sources whilst a background is in use. The Genlock reference input is SD and HD compatible and ensures precise synchronization of the incoming signals by providing a wide Subcarrier lock range with Subcarrier phase adjust.

Integral Audio switching is provided to route audio from the (HDMI-compatible) DVI input or SDI input to the DVI and SDI outputs. An optional Audio Module can provide AES I/O abilities and audio delay and can link to our A2-7300 range of audio break-out units.

Key Features C2-8000 Series

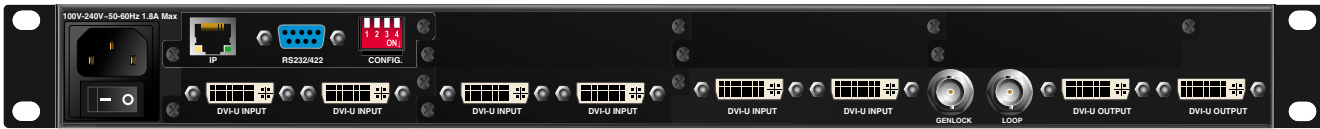
- Up ▲, Down ▼, Cross ✕ Conversion
- High quality seamless switching
- DVI-U inputs (HDMI/CV/YC/RGB/YPbPr): up to 12
- SDI inputs: up to 2 SD/HD/3G-SDI + re-clocked out
- DVI-U outputs: 2 (HDMI/CV/YC/RGB/YPbPr)
- SDI outputs: up to 2 (SD/HD/3G)
- Genlock inputs: 1x Tri/Bi with loop-through
- Analog: PC to 2048x2048, HDTV to 1080p/60
- DVI: PC to 1920x1200, HDTV to 1080p/60
- Supports: NTSC, PAL, PAL-M, PAL-N, SECAM
- HDMI-compatible input & output with HDCP
- Motion Compensation & 3:2 Pull-down
- Diagonal Interpolation
- Noise Reduction for PAL, NTSC and 1080i inputs
- Automatic Incoming Resolution Detection
- AutoSet - Automatic picture sizing of PC inputs
- 4:4:4 Full bandwidth sampling
- Variable Image Zoom to 10X and Shrink to 10%
- Chroma and Luma keying
- Fade, Wipe, Push, Cut transitions
- Video signal parameter adjustments
- Audio de-embed / embed for SDI and HDMI
- Closed-caption de-embed / embed for SDI
- Closed-caption de-embed CV
- Integral Audio Routing
- User-defined Logo insertion
- Still image store
- Borders with variable size and colour
- IP Interface
- RS-232/422/485 interface
- Optional Audio Module with AES break-out and adjustable delay
- Optional Tally Module
- Optional Redundant Power Supplies
- Optional Rear Rack mount supports



Distributor / Vertrieb:

VIDELCO – Professionelle Audio- Video- Medien-Technik!

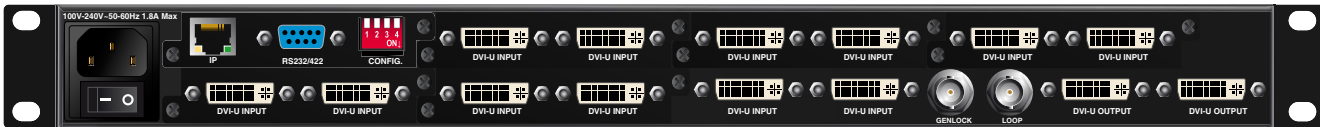
Tel.: +49 (0)2102 / 86 39-00 • Fax: +49 (0)2102 / 86 39-17 • info@videlco.eu • www.videlco.eu



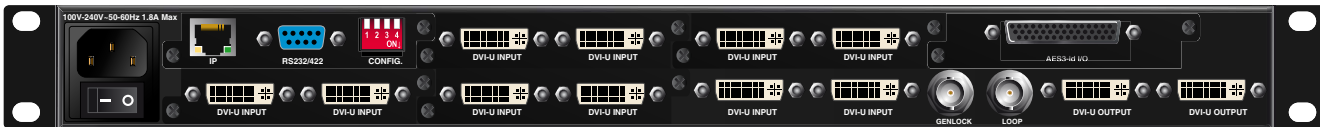
C2-8110



C2-8120



C2-8130



C2-8160



C2-8210

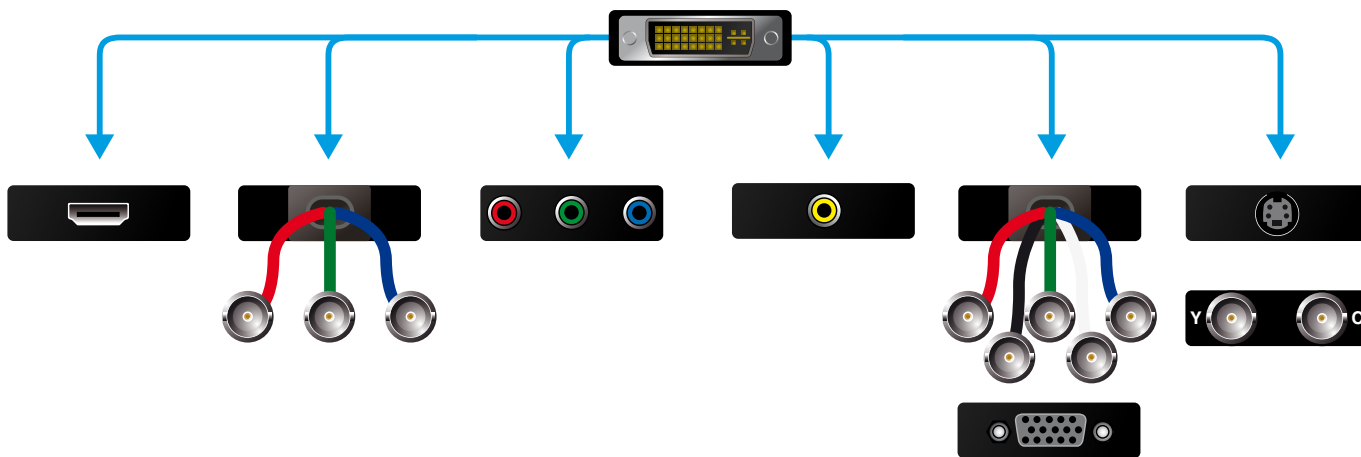


C2-8260



DVI-U

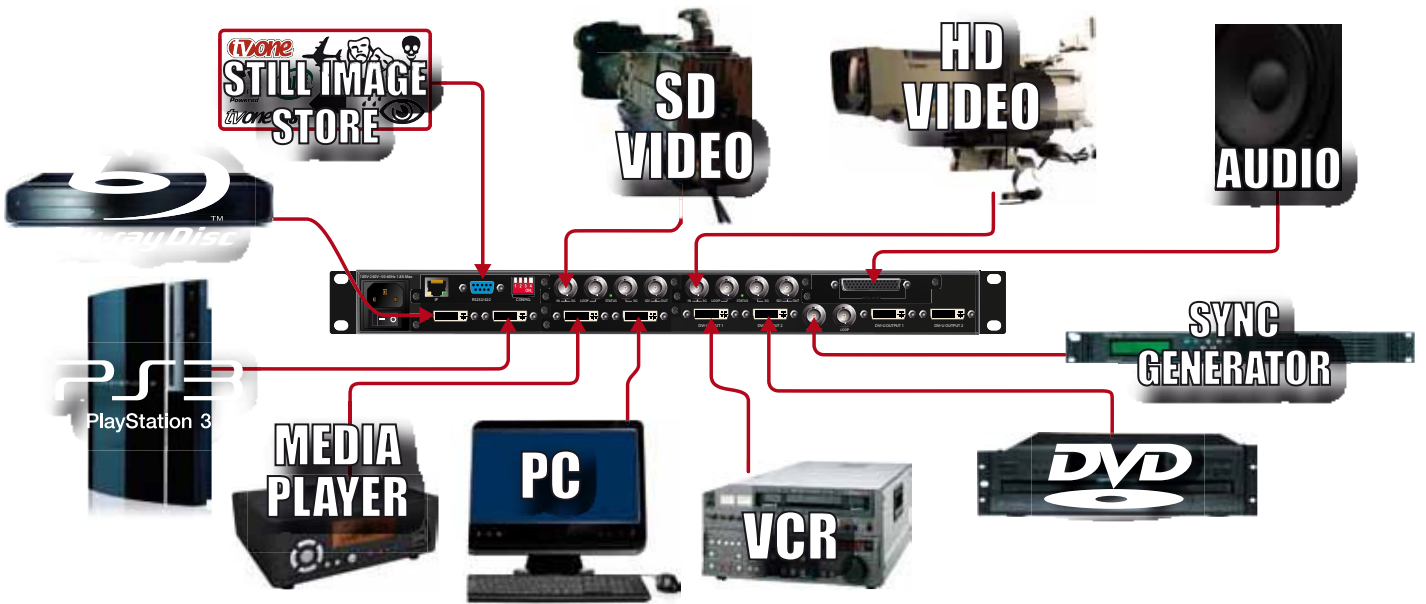
DVI-U support adds an incredible degree of flexibility. The DVI input module of the C2-8000 series provides two single link full bandwidth DVI-U inputs, which support analog (CV/YC/YUV/RGBHV) and digital inputs but not simultaneously. A series of adaptors for HDMI, RGBHV, RGBS, RGsB, YUV, YPbPr, Y/C and CV enable connection to the C2-8000. DVI, RGB, YUV & CV are auto detected, but YC must be user selected. Audio for HDMI inputs is de-embedded and passed to the Video Processor for routing.



Distributor / Vertrieb:

VIDELCO – Professionelle Audio- Video- Medien-Technik!
 Tel.: +49 (0)2102 / 86 39-00 • Fax: +49 (0)2102 / 86 39-17 • info@videlco.eu • www.videlco.eu

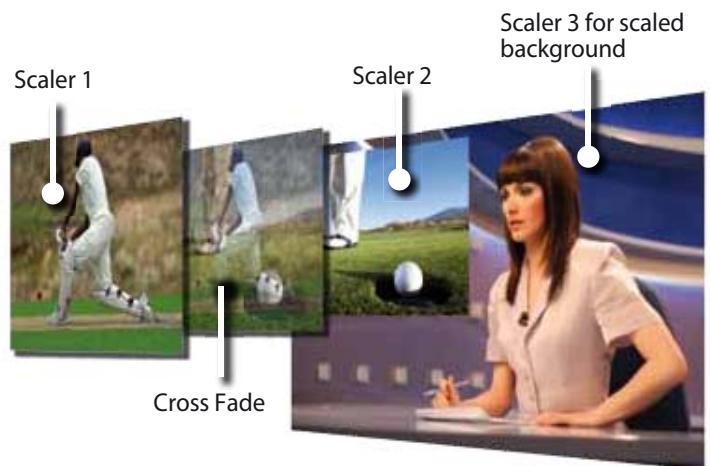




Seamless Switcher

Preview and Program

In Seamless switcher mode one scaler is reserved for Preview and a second for Program in order to achieve a true cross fade between the sources. The third scaler provides a scaled background source. There are a variety of other seamless transitions from Preview to Program including Cut, Push or Wipe.



CC-300 compatibility

The CC-300 CORIO console is the ideal partner for the C2-8000 Series Seamless Switchers. This Video Production type interface provides Preview and Program functionality to the mixed format sources via its 2 rows of 14 programmable buttons. Smooth cross-fades and wipes are either automatic with preset times or manually controlled with the fader bar.

Distributor / Vertrieb:

VIDELCO – Professionelle Audio- Video- Medien-Technik!
 Tel.: +49 (0)2102 / 86 39-00 • Fax: +49 (0)2102 / 86 39-17 • info@videlco.eu • www.videlco.eu

Switching using the Still Image Store

The Still Image Store (SIS) can be used to store graphic elements that are used on a regular basis and can quickly be retrieved as a source. The SIS images can be positioned in Preview and a seamless transition to Program applied.

Preview



SIS positioned in Preview, over a scaled background ...

Program

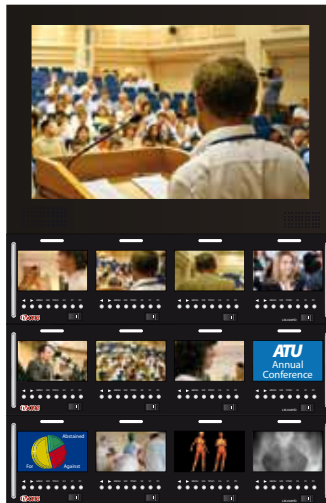


seamlessly replace any SIS element in Program

The ideal Seamless Switcher for live events

The C2-8000's potential to have up to twelve universal inputs, makes it the ideal Seamless Switcher for live events, such as conferences for example. Due to the DVI-U connectors a multitude of different source formats (HD Video, SD Video, PC, DVD ...) can be plugged directly into the C2-8000 Series unit, scaled and output to devices that have the same resolutions, ie a HD monitor, at 720p and a 720p projector.

▼ Preview



Sources ▶

Program



Framelock

The C2-8000 Series has a Genlock input with loop-through enables inputs to be synchronised to a Sync Generator's Tri/Bi Level reference signal. The sub carrier lock range is +/- 250Hz for PAL and +/- 200Hz for NTSC.



Without Framelock



With Framelock sync

Distributor / Vertrieb:

VIDELCO – Professionelle Audio- Video- Medien-Technik!
Tel.: +49 (0)2102 / 86 39-00 • Fax: +49 (0)2102 / 86 39-17 • info@videlco.eu • www.videlco.eu

Independent Mode

In Independent mode the C2-8000 can seamlessly switch between any input (SD/HD/3G-SDI, HDMI, CV, YC, RGB, YPbPr) and output 2 different videos signals (SD/HD/3G, HDMI, CV, YC, RGB, YPbPr) of independent resolutions and frame-rate. Transitions available in Independent mode are Fade thru black, Push, Wipe and Cut.



Output 1 - SXGA LCD



Output 2 - 1080p60 Plasma



Source 1 - ECG



Source 2 - HD Video Camera



Source 3 - SD Video Camera



Logo A



Logo B

Channel Branding

The C2-8000 Series can be used in Independent mode to output 2 separate video sources and layer a different, user defined, stored logo over each for channel branding or digital signage applications. The C2-8000 Series features HDMI compatible input & output with HDCP and also has audio de-embedding/embedding for SDI and HDMI.

R1 96.2FM
R2 102.8FM

Stored Logos



Source 1 HD Video



Source 2 HD Video



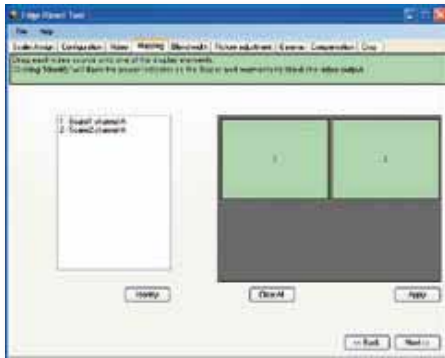
Distributor / Vertrieb:

VIDELCO – Professionelle Audio- Video- Medien-Technik!
Tel.: +49 (0)2102 / 86 39-00 • Fax: +49 (0)2102 / 86 39-17 • info@videlco.eu • www.videlco.eu

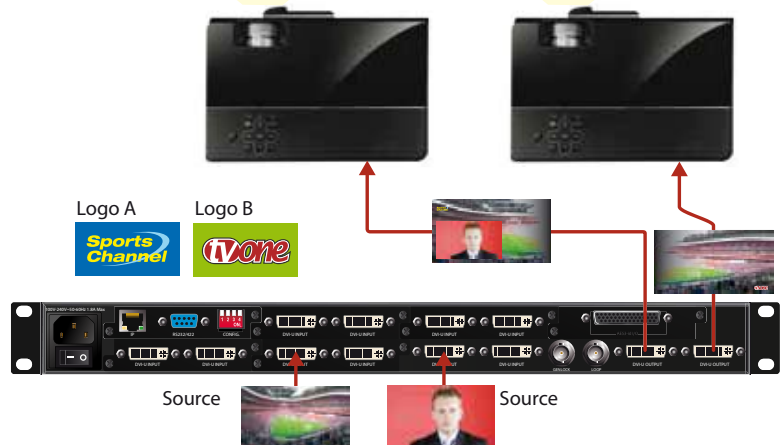


Edge-Blending

The C2-8000 Series can produce an edge blend using two scaling engines, the video is prepared and output to two projectors and blended seamlessly together to create larger, brighter displays. Two user defined logos can be overlaid, one on each side of the image. The third scaler can be used to insert a PIP on the left side of the image. Set up is made simple with the freely available CORIOtools suite, which simplifies mapping, blending, gamma and picture adjustment.



CORIOtools Suite integration
FREE download



Multi PIP Mode

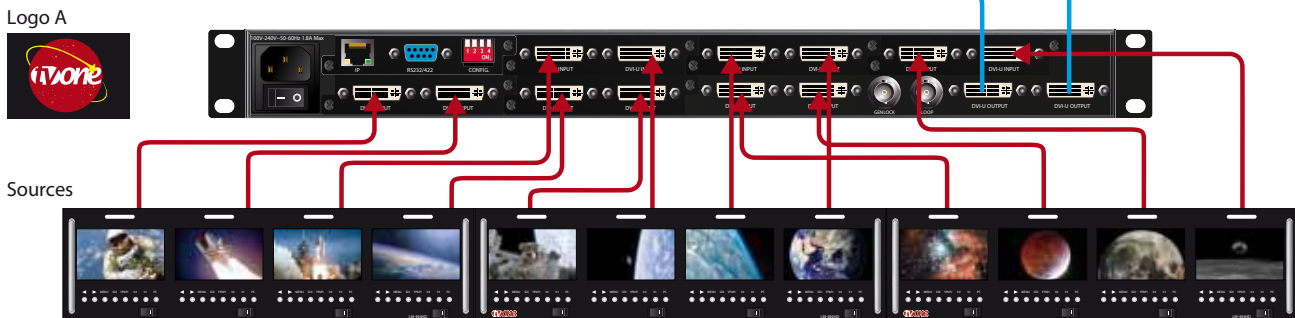
In Multi PIP mode both outputs have the same resolution or are referenced to a house source. Three PIPs can be layered on an unscaled lock source which determines the output resolution. Both Outputs 1 & 2 have identical sources, PIP size and positioning, but the layer order and borders of the PIPs can be different. Transitions available in Multi PIP mode are Fade thru black, Push, Wipe and Cut. A user defined logo can be overlaid.



Output 2



Output 1



Distributor / Vertrieb:

VIDELCO – Professionelle Audio- Video- Medien-Technik!
Tel.: +49 (0)2102 / 86 39-00 • Fax: +49 (0)2102 / 86 39-17 • info@videlco.eu • www.videlco.eu

