

Enterprise-Class Rich Media Delivery Solutions

VBrick delivers Enterprise-class rich media delivery solutions that scale with your needs. The EtherneTV Portal Server enables organizations to record two simultaneous video streams from anywhere in their organization. With the functionality of the VBrick Network Video Recorder, you can increase your recording capabilities with your organization. An integrated component of the EtherneTV product family, Network Video Recorders are easily administered through your Portal Server, and new Network Video Recorders can be added at any time enabling your system to scale with your needs.



Capabilities

The VBrick Network Video Recorder provides the capability to record an unlimited number of simultaneous streams through the use of multiple Network Video Recorder units. Offered in configurations to support up to 10 or 40 simultaneous streams, the Network Video Recorder provides an essential capability to any Enterprise IPTV solution.

Multiple Simultaneous Recordings – Enables 10 or 40 simultaneous streams per unit

Format Independence – Records H.264, Windows Media®, MPEG-1, MPEG-2, and MPEG-4 formatted video streams

Dedicated Server Platform – Designed and validated to assure a flawless recording experience, these units eliminate resource contention issues

Redundancy – Configured with dual power supplies, and offer RAID 1 OS Redundancy and RAID 5 storage redundancy

Application Flexibility – Designed to be easily integrated into the EtherneTV architecture; they also can be deployed as standalone recording units enabling applications such as continuous news archiving

Benefits

- Simplified user interface. Whether scheduled or a real-time record request, there is no additional workflow required to enable the recording and availability of the recordings in the Video On-Demand Server
- Scalable resource. The Network Video Recorder enables up to 40 simultaneous recordings on a single platform, and any number of Network Video Recorders can be added and managed to a single EtherneTV Portal Server
- Reliable, integrated, automated workflow. Fully integrated into the EtherneTV solution, the Network Video Recorder assures that recordings take place without additional workflow requests

Models

8000-0077 EtherneTV Network Video Recorder – 10 (supports up to 10 simultaneous recordings)

8000-0078 EtherneTV Network Video Recorder – 40 (supports up to 40 simultaneous recordings)

8000-0128 EtherneTV Standalone Network Video Recorder – 10 (no Portal Server pre-configuration)

8000-0129 EtherneTV Standalone Network Video Recorder – 40 (no Portal Server pre-configuration)

7510-0172 EtherneTV Network Video Recorder - 10 Upgrade

7510-0173 EtherneTV Network Video Recorder - 40 Upgrade

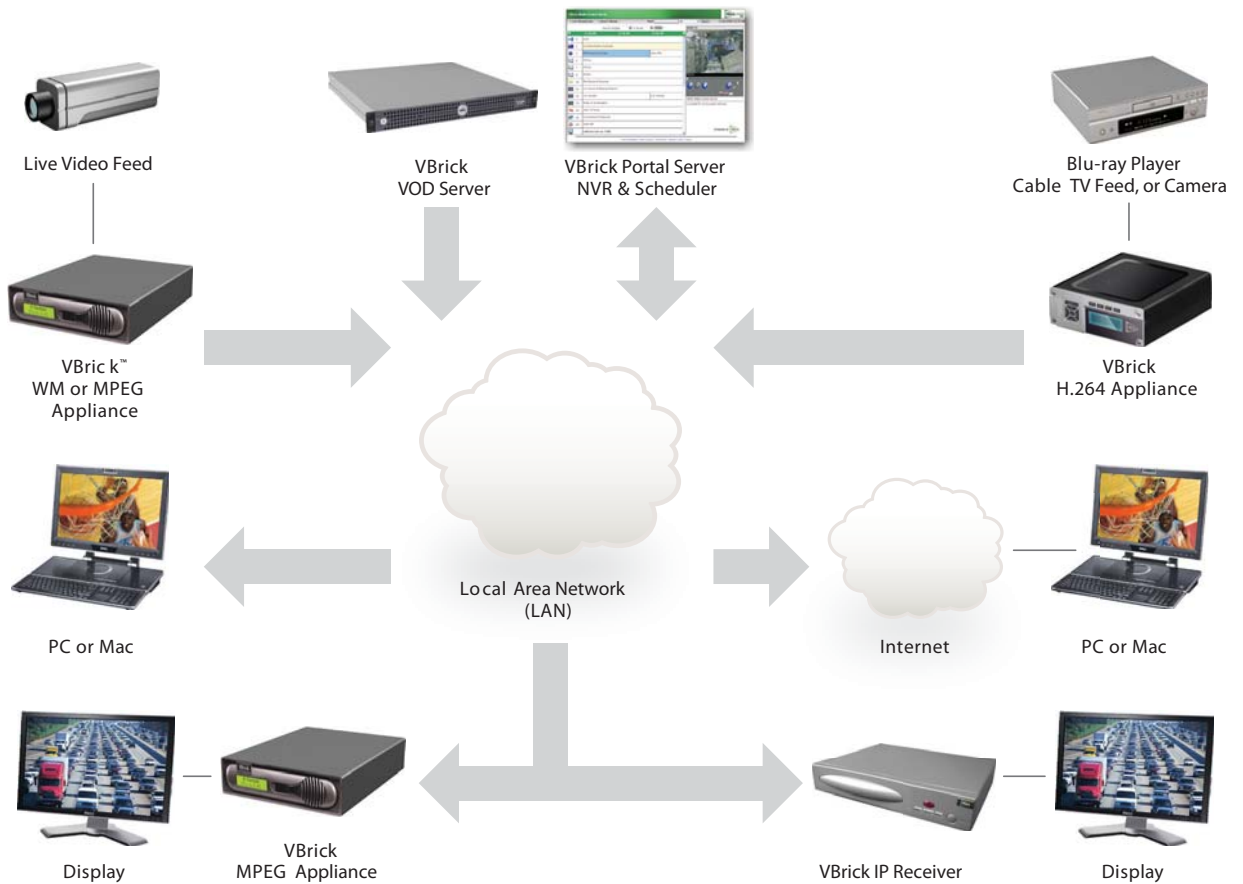
Compatibility

- Records H.264, Windows Media, MPEG-1, MPEG-2, and MPEG-4 video streams
- VBrick Appliances and IP Receivers

Interoperability

- EtherneTV Portal Server and Scheduler
- EtherneTV IP Receiver
- EtherneTV VOD-W and VOD-WM Video On-Demand Servers
- VBrick Appliances

EtherneTV System



	NVR 10	NVR 40
Simultaneous Rec.	10	40*
**OS Drives	146 GB (RAID 1)	292 GB (RAID 1)
Storage	548 GB (RAID 5)	1200 GB (RAID 5)
External Storage	Serial Attached SCSI	Serial Attached SCSI
CPU	Dual Core Xeon Processor	2 - Dual Core Xeon Processors
Memory	1GB	2GB
Chassis	2RU	2RU
Network	Dual Port Gigabit Ethernet	Dual Port Gigabit Ethernet
Windows Server OS	2003 Web Edition	2003 Web Edition
Power Supplies	Redundant	Redundant
CD-ROM	Yes	Yes
Floppy Drive	Yes	Yes

* MPEG-2 at default VBrick encoder rate. Higher rates may support less simultaneous records.

** Unformatted Capacity